

# PRODUCT INFORMATION PACKET



Model No: 194012.00  
Catalog No: 194012.00  
25 HP Washdown, 3 phase, 3600 RPM, 208-230/460 V, 284TC Frame, TEFC  
Paint Free IEC Washdown Motors



Regal and Leeson are trademarks of Regal Beloit Corporation or one of its affiliated companies.  
©2019 Regal Beloit Corporation, All Rights Reserved. MC017097E

The Regal logo is located in the bottom right corner. It features the word "REGAL" in a white, sans-serif font, set against a dark gray, rectangular background with a slightly distressed or metallic texture.



### Nameplate Specifications

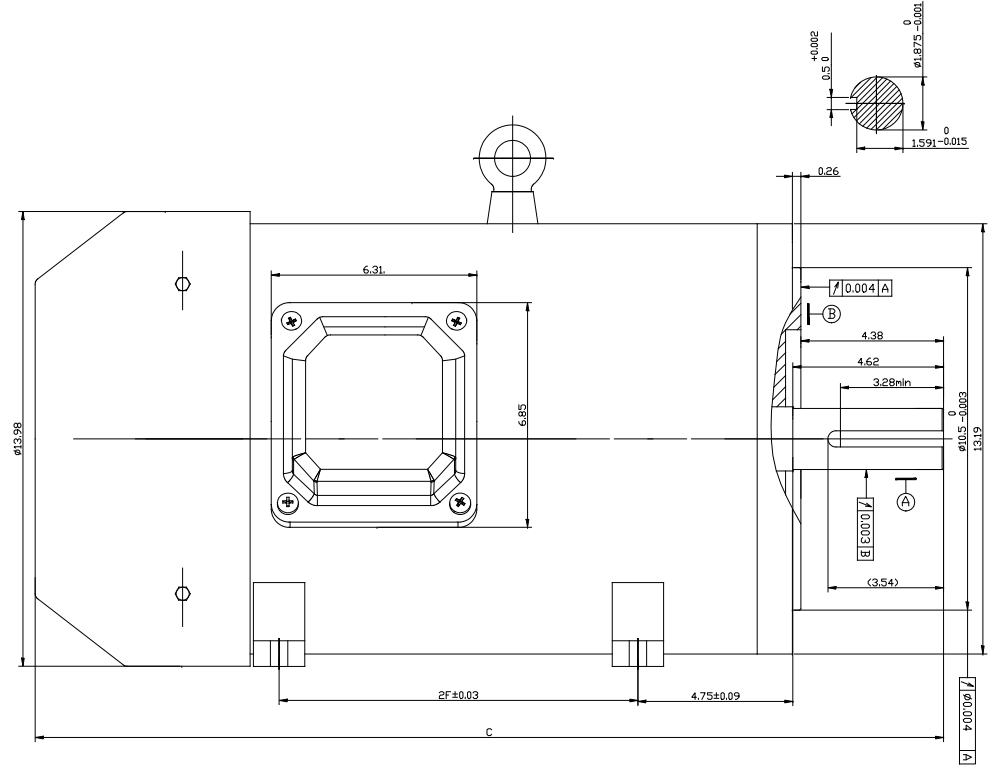
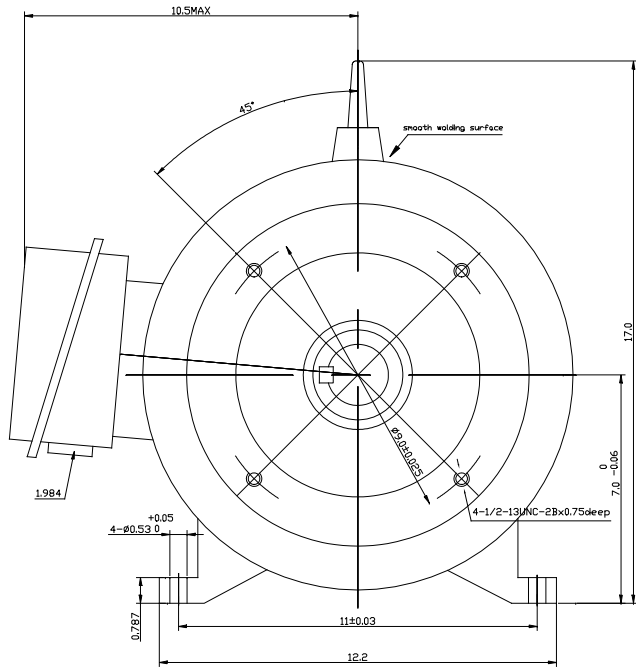
Output HP	25 Hp	Output KW	18.7 kW
Frequency	60 Hz	Voltage	208-230/460 V
Current	63.0-56.5/28.3 A	Speed	3550 rpm
Service Factor	1.15	Phase	3
Efficiency	91.7 %	Power Factor	89
Duty	Continuous	Insulation Class	F
Design Code	B	KVA Code	G
Frame	284TC	Enclosure	Totally Enclosed Fan Cooled
Thermal Protection	No	Ambient Temperature	40 °C
Drive End Bearing Size	6310	Opp Drive End Bearing Size	6212
UL	Recognized	CSA	Y
CE	N	IP Code	55

### Technical Specifications

Electrical Type	Squirrel Cage Inverter Rated	Starting Method	Line Or Inverter
Poles	2	Rotation	Reversible
Mounting	Rigid base	Motor Orientation	Horizontal
Drive End Bearing	Ball	Opp Drive End Bearing	Ball
Frame Material	Stainless Steel	Shaft Type	T
Overall Length	26.97 in	Shaft Diameter	1.875 in
Shaft Extension	4.64 in	Assembly/Box Mounting	F1/F2 CAPABLE

This is an uncontrolled document once printed or downloaded and is subject to change without notice. Date Created:01/11/2019

SS620848



LEESON PART NO.	FRAME	HP	VOLTS	Hz	RPM	MOUNTING	S.F	DUTY	ENCL.	PH	2F	C
194012.00	284TC-2	25	230/460	60	3600	RIGID+C FLANGE	1.15	CONT.	TEFC	3	9.5	26.97MAX
194013.00	284TC-4	25	230/460	60	1800	RIGID+C FLANGE	1.15	CONT.	TEFC	3	9.5	26.97MAX
194014.00	286TC-2	30	230/460	60	3600	RIGID+C FLANGE	1.15	CONT.	TEFC	3	11.0	27.95MAX
194015.00	286TC-4	30	230/460	60	1800	RIGID+C FLANGE	1.15	CONT.	TEFC	3	11.0	27.95MAX

NOTE:  
1. TO REFERENCE DW DRAWING 00PW201709

				TOLERANCES UNLESS SPECIFIED		REGAL REGAL-BELOIT CORPORATION	TITLE OUTLINE SST 280 FRAME	DRAWN CHK APPD SCALE REF FMF PREV
				DEC.	METRIC			
				.X	±.25			
				.XX	±.76			
B	NOTE ADDED	NK	9/25/18	ST	.XXX	±.127		
A	RELEASED FOR PRODUCTION ECO-0126037	WGJ	6-27-17	EMH	.XXXX	±.0127	MAT'L	
NO.	REVISION	BY & DATE	CHK	ANG	±1/2	FINISH		
THIS DRAWING IN DESIGN AND DETAIL IS OUR PROPERTY AND MUST NOT BE USED EXCEPT IN CONNECTION WITH OUR WORK ALL RIGHTS OF DESIGN AND INVENTION ARE RESERVED THIS IS AN ELECTRONICALLY GENERATED DOCUMENT - DO NOT SCALE THIS PRINT				RFP	CAD FILE		SS620848	SIZE
				DIST				DRAWING NO.
							B	SS620848
								REV.
								B